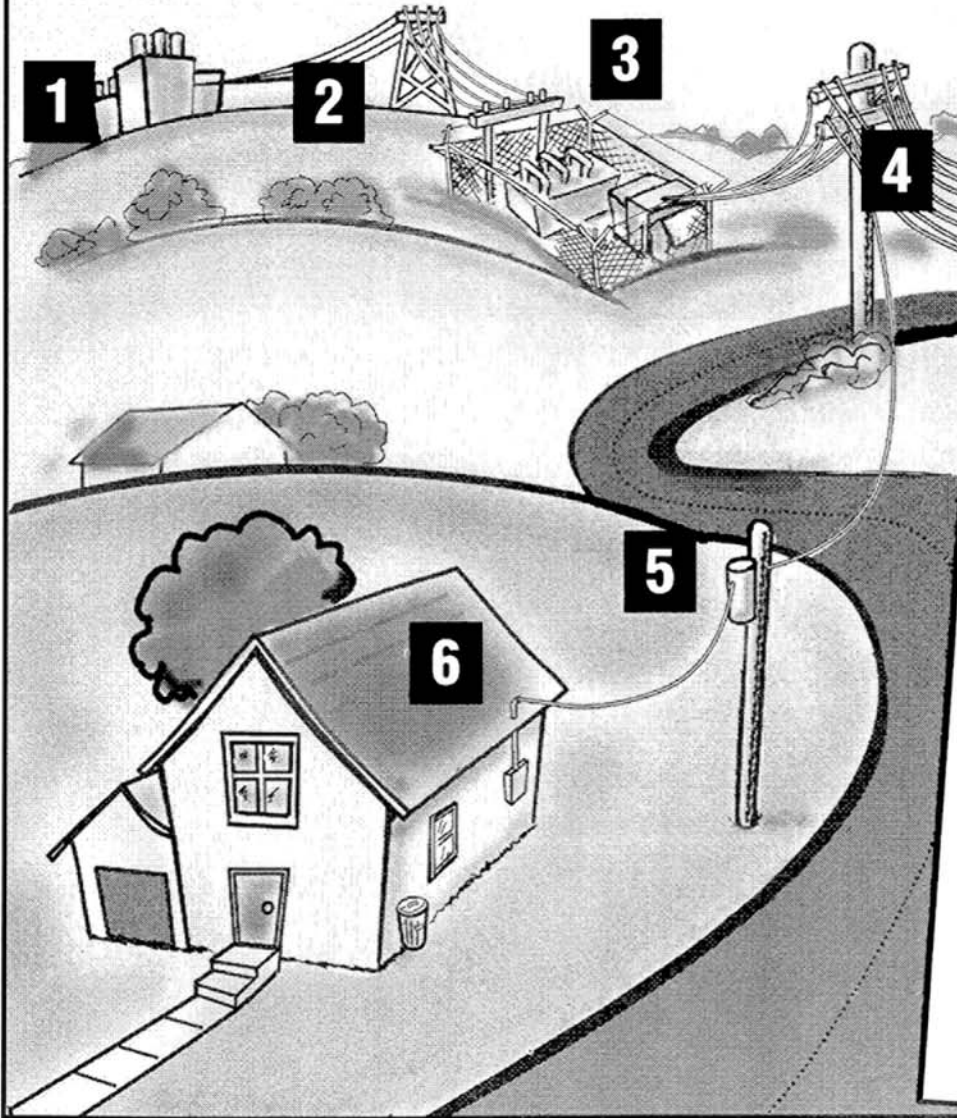


How Electricity Gets to Your Home.

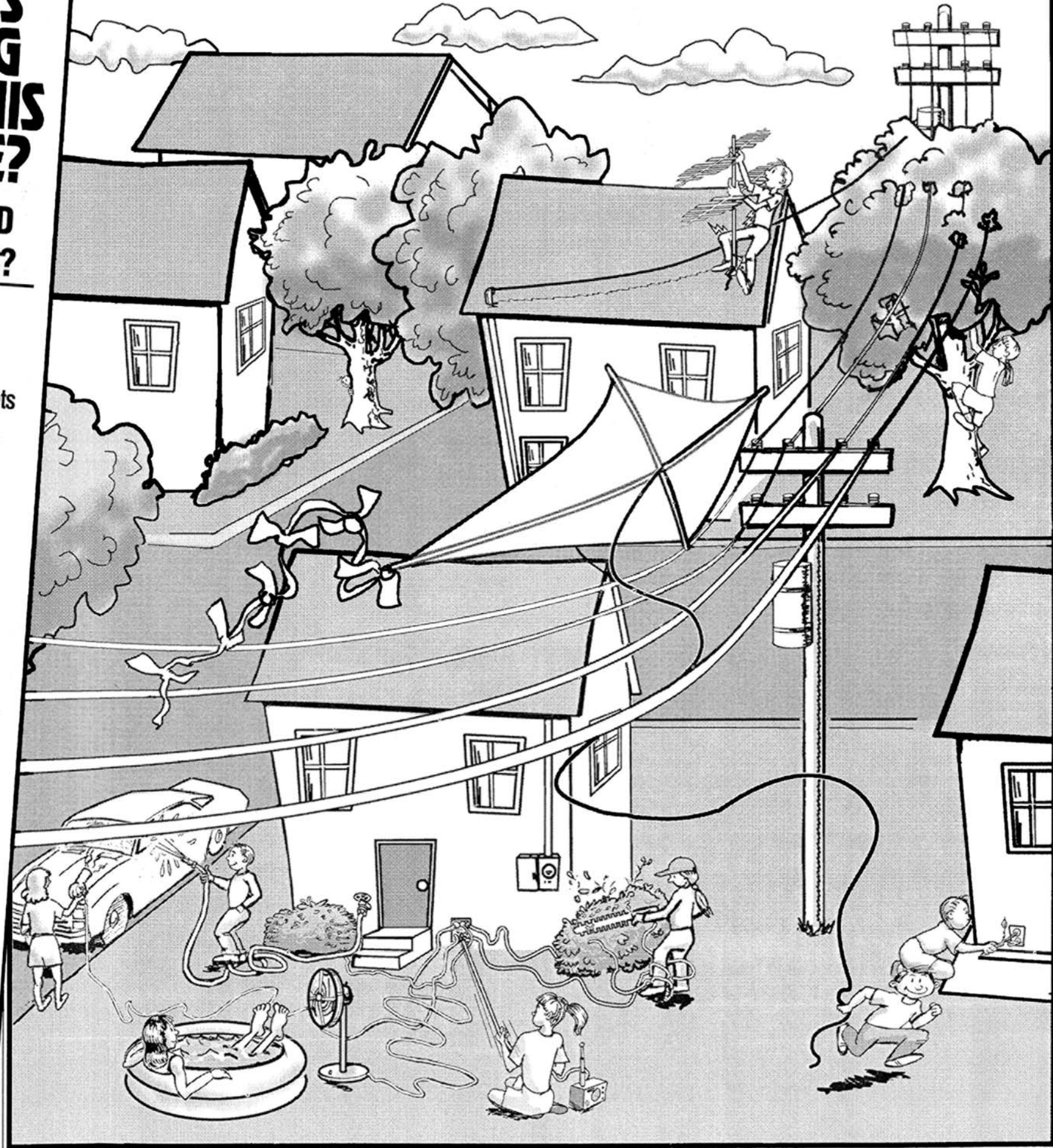
- 1** It all starts at the power plant. That's where the electric company makes electricity in machines called "generators".
- 2** From the power plant, electricity travels across wires high in the air called transmission lines. Transmission lines have a very high voltage. That means they're very dangerous. You should always stay away from the tall towers that carry transmission lines.
- 3** The next stop is a substation. Substations take large amounts of electricity and divide it up for use at many different places—houses and businesses. Substations have fences to keep people out. That's because substations have lots of electricity running through them. You should never play near a substation.
- 4** From the substation electricity is sent through wires called distribution lines. Distribution lines bring electricity across tall poles and into entire neighborhoods—like yours.
- 5** Transformers are the big metal cans on top of utility poles. They lower the voltage so you can safely use it in your house. You should never throw things or shoot at transformers because they are full of hot oil.
- 6** Finally, after it leaves a transformer, electricity travels through a service drop. This brings it right to your house—so you can have electricity to turn on lights, play video games, and keep cool in the summer. And that's the end of electricity's amazing journey!



WHAT'S WRONG WITH THIS PICTURE? CAN YOU FIND THE HAZARDS?

Look for these seven hazards.

- 1.** Never overload outlets with too many plugs.
- 2.** Don't use electrical appliances around water.
- 3.** Never fly kites near power lines.
- 4.** Don't get tangled in electric cords.
- 5.** Never climb trees near power lines.
- 6.** Never pull a plug by its cord.
- 7.** Be aware of where the cord is on electric mowers and hedge-trimmers.
- 8.** Never put anything other than an electrical plug in an outlet.



HOME ELECTRICAL SAFETY QUIZ

This quiz is for you and your parents to go over at home.

True False

- | | | |
|--------------------------|--------------------------|---|
| <input type="checkbox"/> | <input type="checkbox"/> | 1. Only qualified electricians should work on house wiring. |
| <input type="checkbox"/> | <input type="checkbox"/> | 2. You should trip circuit breakers every six months and ground fault interrupters monthly to make sure they are working. |
| <input type="checkbox"/> | <input type="checkbox"/> | 3. When a fuse burns out, you should replace it with a larger one so that it will last longer. |
| <input type="checkbox"/> | <input type="checkbox"/> | 4. Circuits need not be labeled. |
| <input type="checkbox"/> | <input type="checkbox"/> | 5. All appliances and cords should have the UL label to ensure safety. |
| <input type="checkbox"/> | <input type="checkbox"/> | 6. Multiple attachment plugs should never be used because they are a fire hazard. |
| <input type="checkbox"/> | <input type="checkbox"/> | 7. Extension cords can be hidden under rugs. |
| <input type="checkbox"/> | <input type="checkbox"/> | 8. Worn or damaged cords and plugs are a fire hazard. |
| <input type="checkbox"/> | <input type="checkbox"/> | 9. If you experience slight tingling shock from handling or touching an appliance, you should disconnect it and have it repaired. |
| <input type="checkbox"/> | <input type="checkbox"/> | 10. Outlet plug covers can prevent an accident by making the electrical outlet inaccessible to small children. |

ANSWERS: 1. T, 2. T, 3. F, You should replace it with the same size fuse. 4. F, Circuits should be labeled for ease in identifying a problem, 5. T, 6. T, 7. F, This could cause cords to become worn and frayed thus creating a fire hazard, 8. T, 9. T, 10. T

Electrical Safety Word Search

Find the words in the alphabet grid.
We've circled one to help you get started.

S	H	O	C	K	A	E	W	I	R	E	S
U	A	K	G	R	P	O	X	P	D	F	H
B	M	F	N	P	L	U	G	S	A	M	L
S	V	C	E	S	A	V	H	W	N	I	E
T	W	O	N	T	L	P	B	J	G	K	C
A	A	R	E	L	Y	C	L	H	E	S	T
T	R	D	R	O	M	E	T	H	E	R	E
I	N	S	G	V	F	N	D	X	L	W	I
O	I	U	Y	W	I	L	P	T	O	M	C
N	N	B	T	N	C	K	U	V	P	S	I
X	G	Y	G	D	P	O	W	E	R	N	T
T	R	A	N	S	F	O	R	M	E	R	Y

SHOCK	ELECTRICITY	WIRES	SAFETY
TRANSFORMER	LIGHTNING	CORDS	DANGER
SUBSTATION	ENERGY	PLUGS	WARNING
VOLTS	POWER	OUTLET	METER



Activities to help you to
be Safety Smart Around
Electricity

PUBLIC SERVICE COMPANY OF OKLAHOMA

PSOKLAHOMA.COM